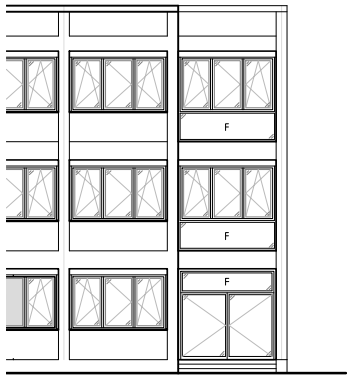
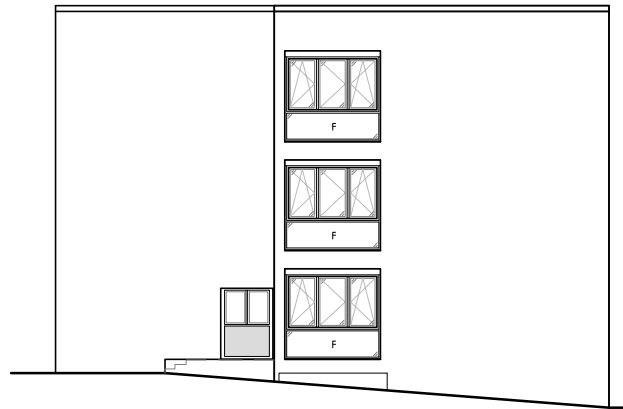


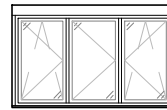
Ansicht von NORDEN



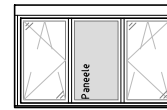
Ansicht von SÜDEN



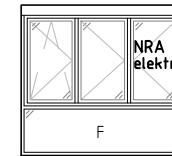
Ansicht von OSTEN



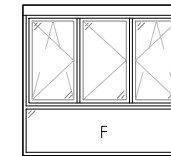
Fenster 1



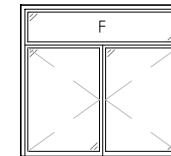
Fenster 2



Fenster 3



Fenster 4



Fenster 5



Fenster 6



Stadt
Erlangen

24 242-1 Na
AMT ABTL. GEPR. GEZ.

DATUM: 25.01.2023

MASSTAB: 1: 250/ 1:150

Objekt: 63B

Klassentrakt Nord-, Süd-, Ostansicht
Planung neue Fenster

Realschule am Europakanal