



Human sweat droplets [1]

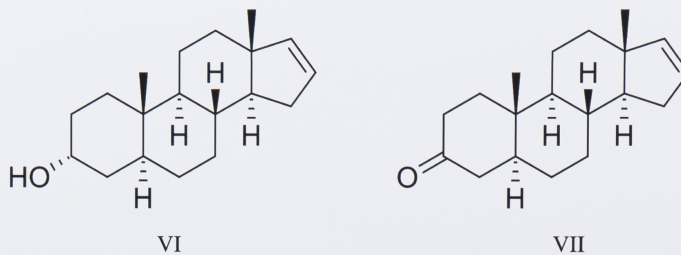
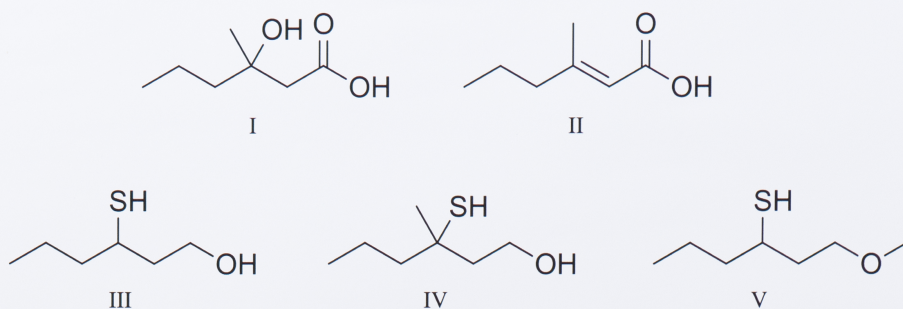
Sweat is mostly water.

On average, the mineral composition is:

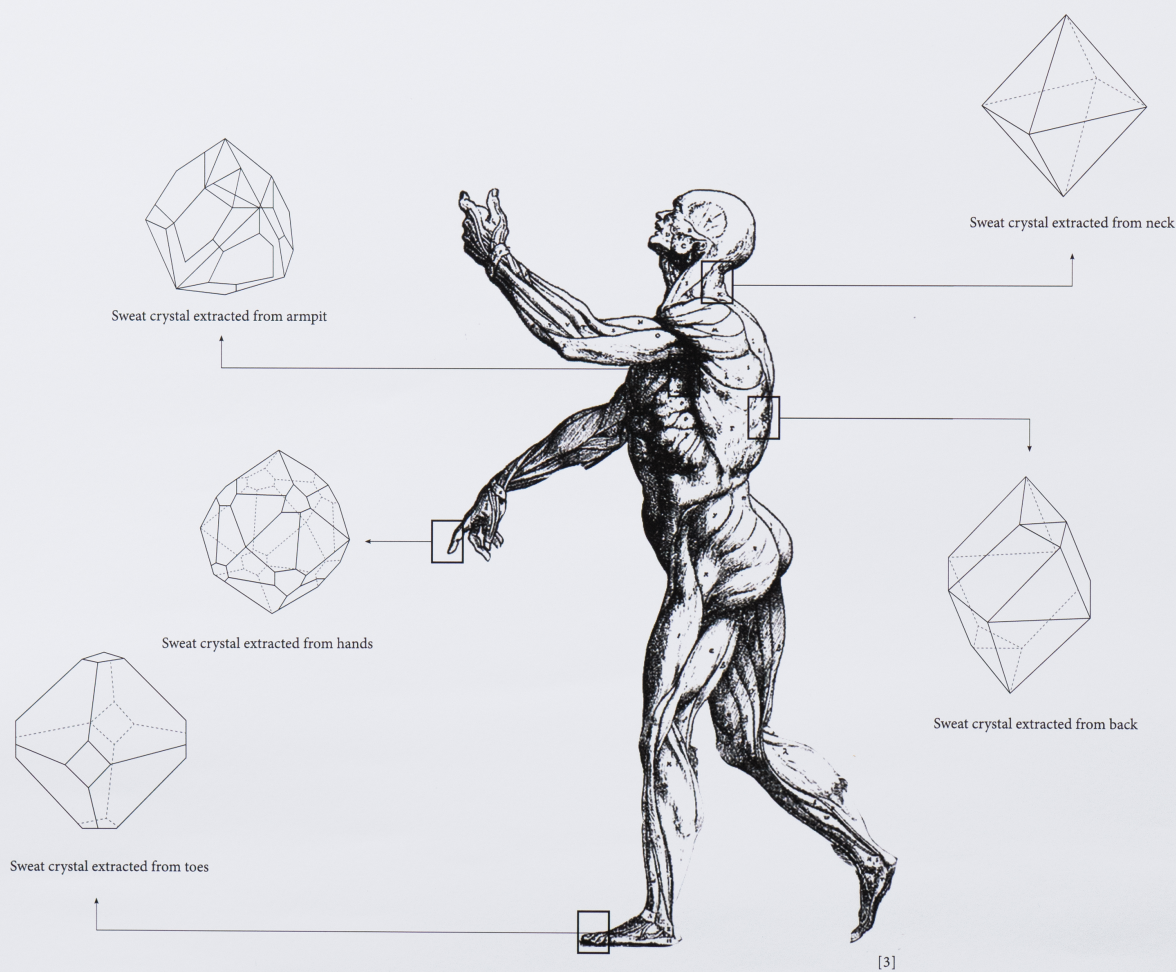
Sodium (0.9 gram/liter)
Potassium (0.2 g/l)
Calcium (0.015 g/l)
Magnesium (0.0013 g/l)

Trace metals:

Zinc (0.4 milligrams/liter)
Copper (0.3–0.8 mg/l)
Iron (1 mg/l)
Chromium (0.1 mg/l)
Nickel (0.05 mg/l)
Lead (0.05 mg/l)



Elements found in sweat under armpits [2]



References:

[1] Image: www.shutterstock.com

[2] Image: www.chemistry.stackexchange.com/questions/33862/what-is-the-chemistry-behind-smell-of-human-perspiration

[3] Image: 'The Expressiveness of the Body, Shigehisa Kuriyama'

[4] www.wikipedia.org/wiki/perspiration

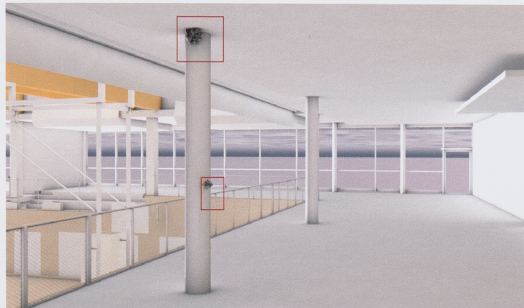
99% WASSER / 99% WATER



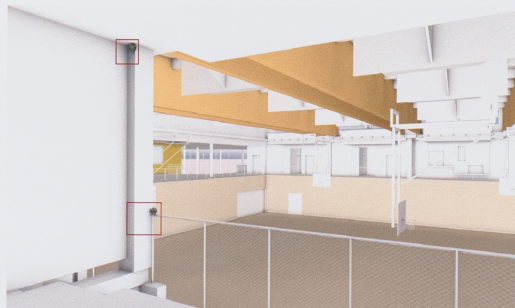
Site Plan 1:1000



1 - Entrance to BBGZ



3,4 - Foyer of four-field hall



5,6 - Stands in the four-field hall



9 - Entrance to family centre



7,8 - Changing rooms

