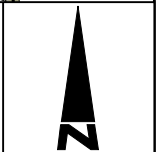


STADT ERLANGEN
Tiefbauamt

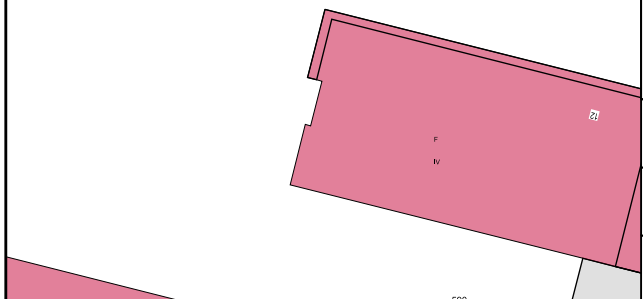


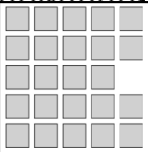
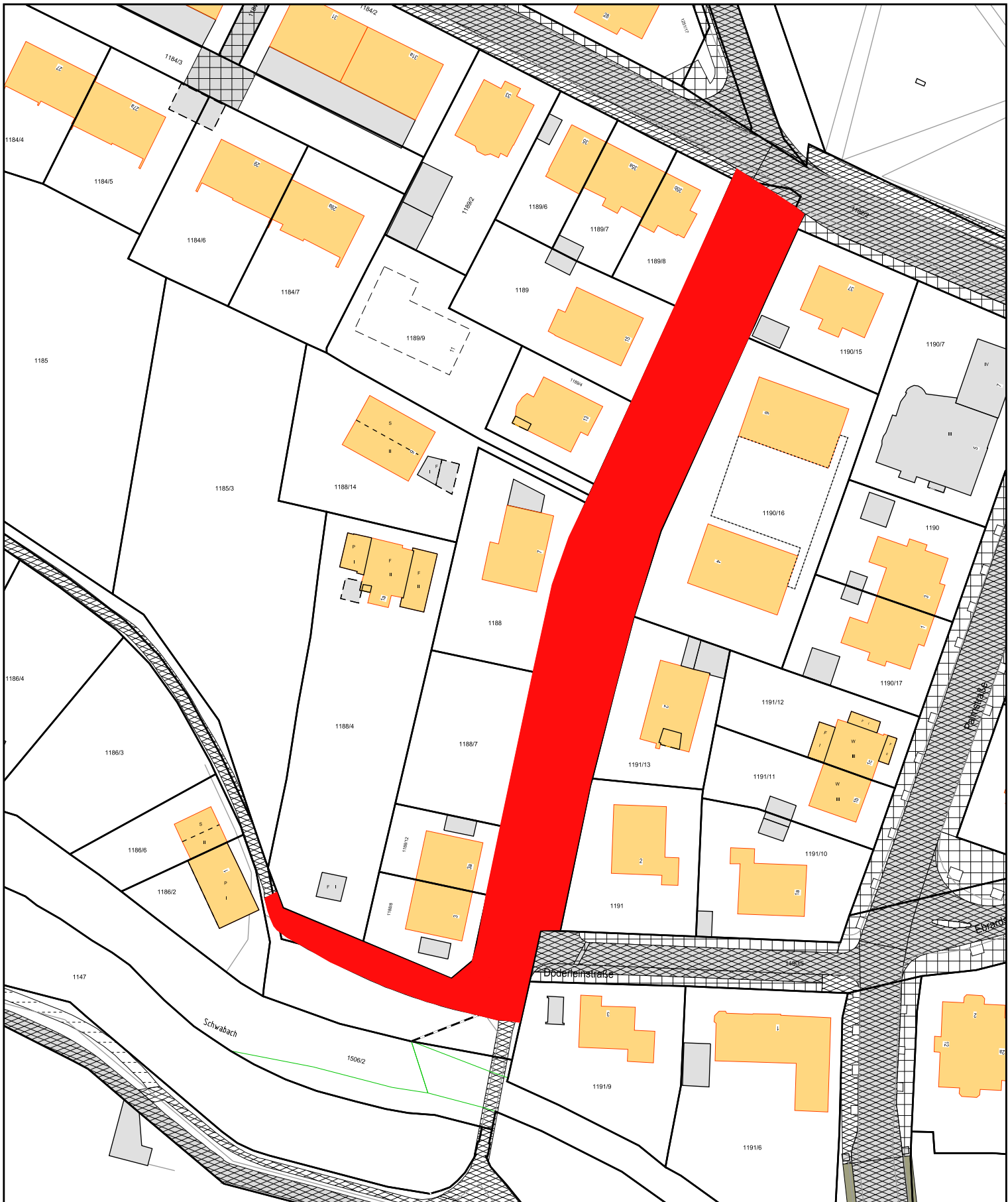
Lammersstraße/Papellierweg

Aufstufung/Widmung

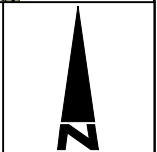
Maßstab = 1:1000

Datum: 26.08.2020





STADT ERLANGEN
Tiefbauamt



Lammersstraße/Papellierweg

Gesamtansicht nach Aufstufung/Widmung

Maßstab = 1:1000

Datum: 26.08.2020

